

StoCare[®]

PROTECT SPRAY

Our StoCare Protect range creates a consistent barrier 'like a second skin'. The barrier prevents moisture content sitting in contact with the skin whilst also protecting the skin from the effects of repeated medical adhesive removal.



Effective
Protective Barrier



Maintains
Healthier Skin



Enhances appliance
adhesion



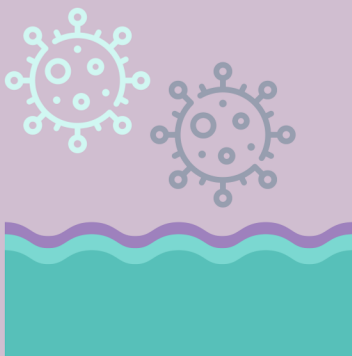
Latest bag-on-
valve technology



StoCare[®] PROTECT SPRAY

Keeps your patient's skin healthy in several ways:

Our StoCare Protect Spray provides a consistent barrier '**like a second skin**' to prevent damage from moisture associated with stoma output and wounds. The barrier prevents moisture content sitting in contact with the skin.



In addition the StoCare Protect Spray helps to protect peristomal skin from the effects of repeated medical adhesive removal which can cause further problems by stripping the skin. This damages the skin's natural barrier making it more susceptible to infection and irritation.

StoCare Protect Spray contains an **emollient** which **soothes** the skin, assisting in the healing process and in the maintenance of healthy peristomal skin.



StoCare Protect Spray **enhances the adhesion** of adhesive products such as stoma appliances and dressings. This helps to prevent leakage in the first place allowing skin to heal and allowing the appliance to last longer. Less appliance changes means less disturbance of delicate skin and leads to better healing.

StoCare® PROTECT WIPES

Our StoCare Protect range creates a consistent barrier 'like a second skin.' The barrier prevents moisture content sitting in contact with the skin whilst also protecting the skin from the effects of repeated medical adhesive removal.



Quality extra moist wipe



Effective protective formula
maintains healthier skin



Enhances appliance adhesion

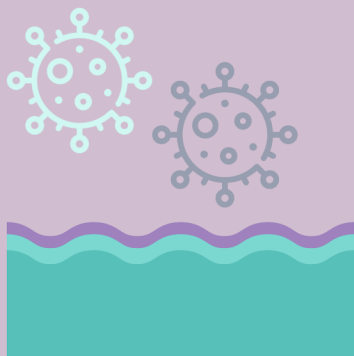


Convenient individually wrapped
sachets

StoCare[®] PROTECT Wipes

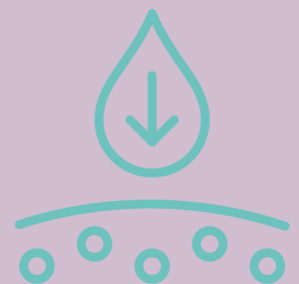
Keeps your patient's skin healthy in several ways:

Our StoCare Protect Wipes provide a consistent barrier '**like a second skin**' to prevent damage from moisture associated with stoma output and wounds. The barrier prevents moisture content sitting in contact with the skin.



In addition the StoCare Protect Wipes helps to protect peristomal skin from the effects of repeated medical adhesive removal which can cause further problems by stripping the skin. This damages the skin's natural barrier making it more susceptible to infection and irritation.

StoCare Protect Wipes contain an **emollient** which **soothes** the skin, assisting in the healing process and in the maintenance of healthy peristomal skin.



StoCare Protect Wipes **enhance the adhesion** of adhesive products such as stoma appliances and dressings. This helps to prevent leakage in the first place allowing skin to heal and allowing the appliance to last longer. Less appliance changes means less disturbance of delicate skin and leads to better healing.